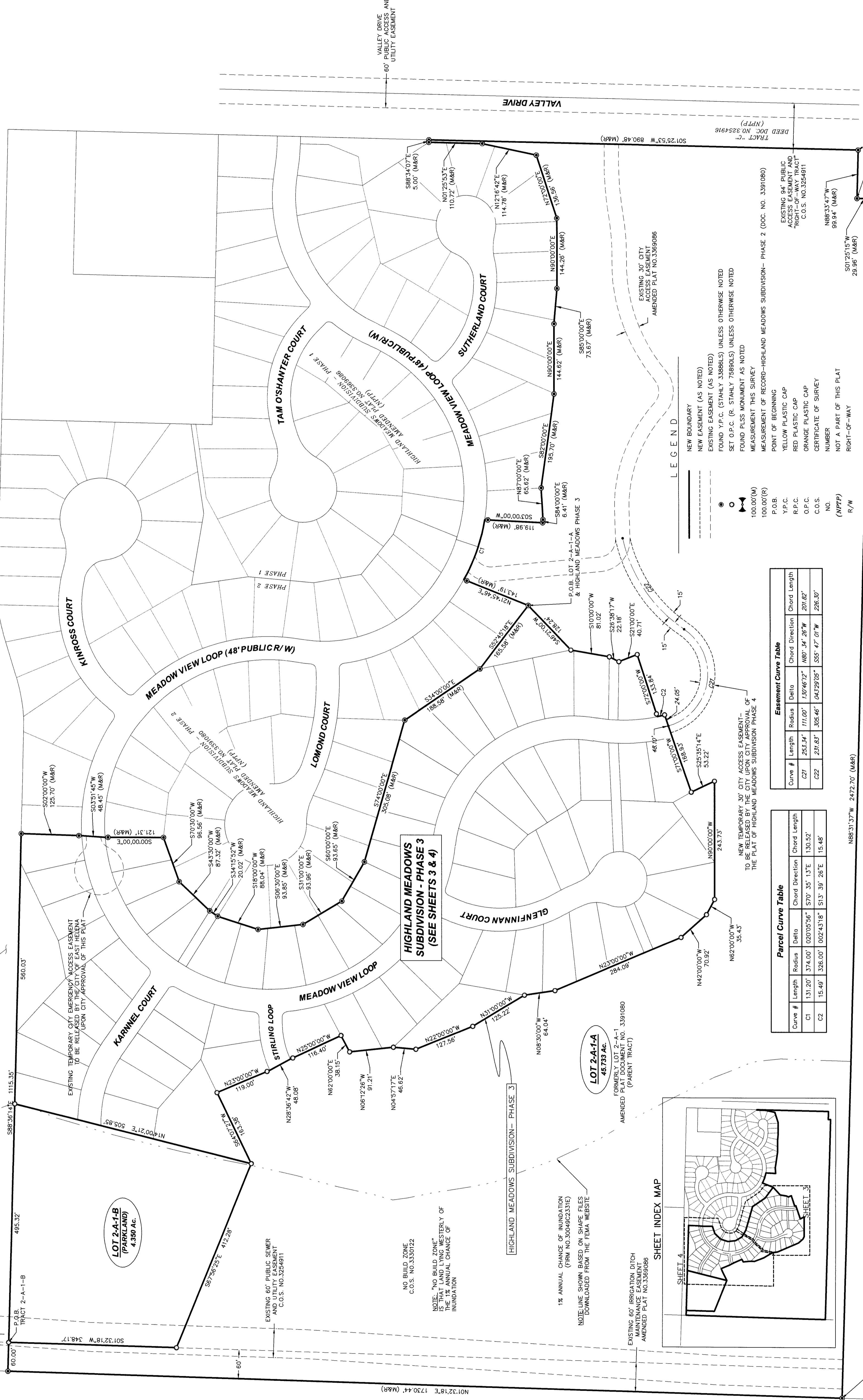




**AMENDED PLAT OF LOT 2-A-1 OF THE HIGHLAND MEADOWS SUBDIVISION - PHASE 2  
TO BE KNOWN AS HIGHLAND MEADOWS SUBDIVISION - PHASE 3**

A SUBDIVISION OF LOT 2-A-1 OF THE HIGHLAND MEADOWS SUBDIVISION - PHASE 2, DOCUMENT NO. 3391080,  
LOCATED WITHIN THE NORTHEAST QUARTER OF SECTION 25, TOWNSHIP 10 NORTH, RANGE 3 WEST, P.M.M.,  
CITY OF EAST HELENA, LEWIS AND CLARK COUNTY, MONTANA

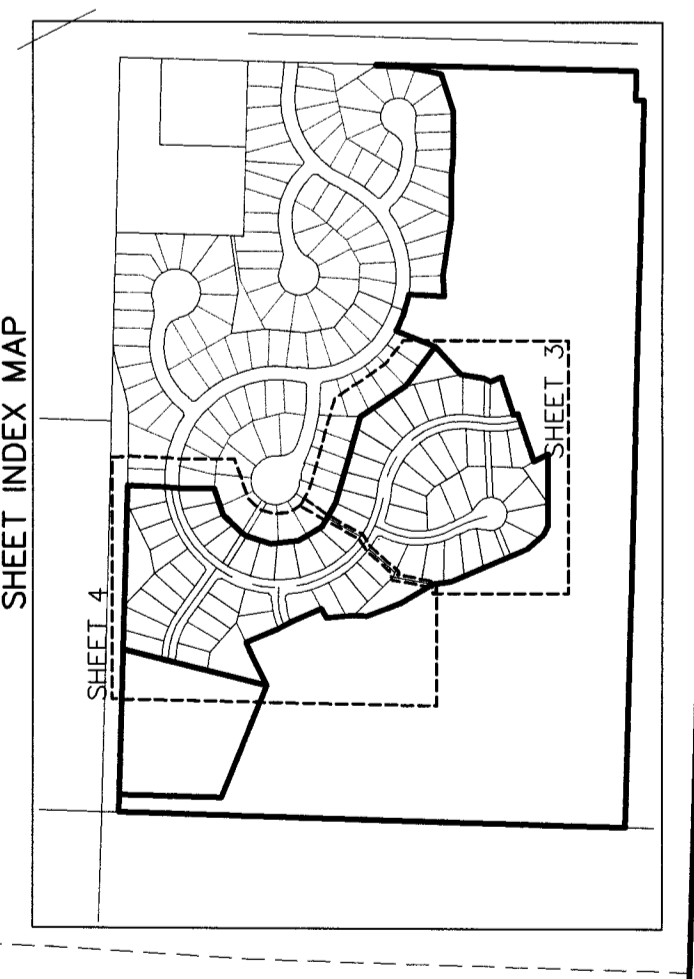


**Easement Curve Table**

Curve #	Length	Radius	Delta	Chord Direction	Chord Length
C27	253.14'	711.00'	139°26'17"	N89°34'29"W	201.62'
C22	231.63'	325.46'	143°29'25"	S55°17'07"W	129.30'

**Parcel Curve Table**

Curve #	Length	Radius	Delta	Chord Direction	Chord Length
C1	131.20'	374.00'	02°02'56"	S70°35'13"E	130.52'
C2	15.49'	326.00'	00°24'31.8"	S13°39'26"E	15.48'



**AMENDED PLAT**

1/4 SEC	T	R	1/4 SEC	T	R
<input checked="" type="checkbox"/>	25	10N	<input checked="" type="checkbox"/>	3W	

COUNTY: LEWIS & CLARK  
PRINCIPAL MERIDIAN: MONTANA

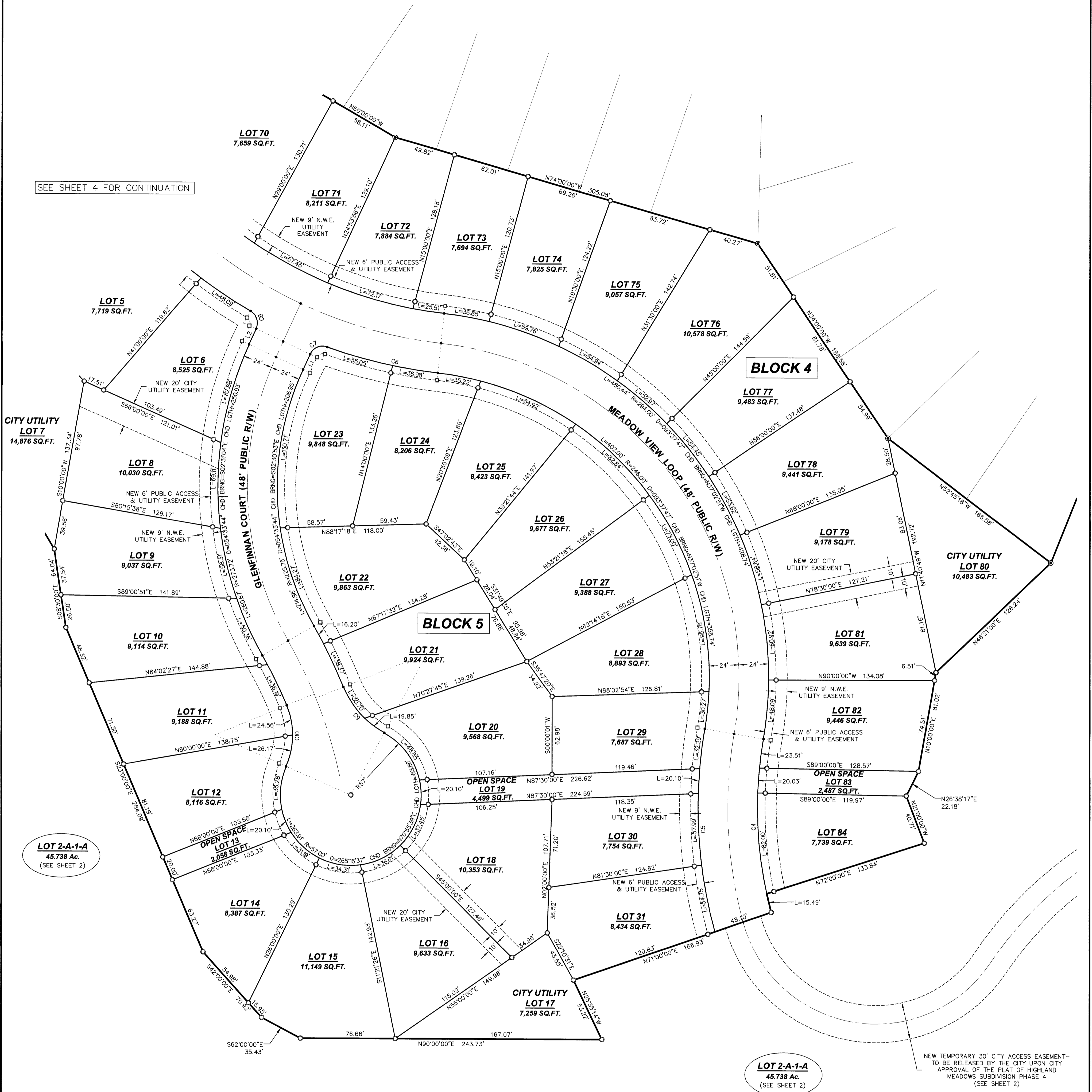
**STAHLY ENGINEERING & ASSOCIATES**  
PROFESSIONAL ENGINEERS & SURVEYORS  
www.stahly.com  
3530 CENTENNIAL DR. SUITE 1  
BILLINGS, MT 59101  
Phone: (406) 442-8594  
Fax: (406) 442-8557

BASES OF BEARING, CURVE POSITIONS, OBSERVED ON 11-14-2018  
MONTANA STATE PLANE, NAD83, MONTANA 2500  
LIFTING METHOD, MONUMENTED POINTS  
NORTH LATITUDE: 46°32'59.96815"  
WEST LONGITUDE: -111°55'01.73827"  
MERIDIAN CONVERGENCE ANGLE = (-) 01'46.05"  
ALL DISTANCES ARE IN INTERNATIONAL FOOT UNITS.

L:\2821-Highland Meadows LLC\00721\_Phase\_3\DWG\Survey\2821-00721\_PP.dwg, 3 DETAIL, Plotted: Dec 21, 2022 - 9:58am

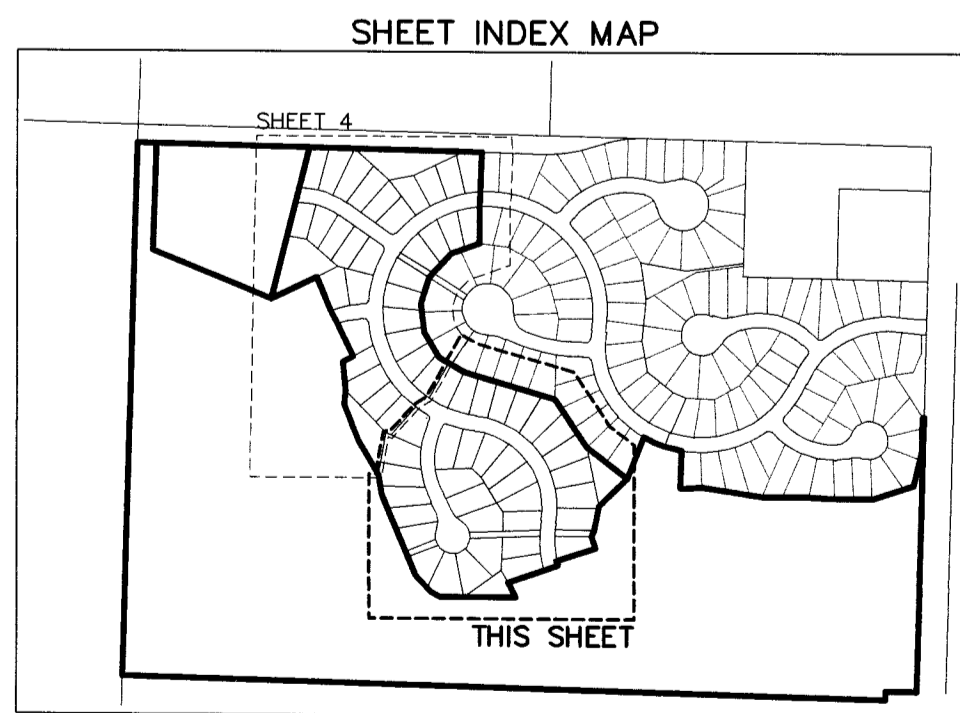
# AMENDED PLAT OF LOT 2-A-1 OF THE HIGHLAND MEADOWS SUBDIVISION - PHASE 2 TO BE KNOWN AS HIGHLAND MEADOWS SUBDIVISION - PHASE 3

A SUBDIVISION OF LOT 2-A-1 OF THE HIGHLAND MEADOWS SUBDIVISION - PHASE 2, DOCUMENT NO. 3391080,  
LOCATED WITHIN THE NORTHEAST QUARTER OF SECTION 25, TOWNSHIP 10 NORTH, RANGE 3 WEST, P.M.M.,  
CITY OF EAST HELENA, LEWIS AND CLARK COUNTY, MONTANA



### LEGEND

- NEW BOUNDARY
- - - NEW EASEMENT (AS NOTED)
- - - EXISTING EASEMENT (AS NOTED)
- FOUND Y.P.C. (STAHLY 33886LS) UNLESS OTHERWISE NOTED
- SET 5/8"X24" REBAR WITH O.P.C. (R. STAHLY 75890-LS)
- SET 1/2"X18" REBAR WITH R.P.C. (R. STAHLY 75890-LS)
- CALCULATED GEOMETRY POINT (RADIAL WITH CENTERLINE GEOMETRY—NOTHING SET)
- 100.00'(M) MEASUREMENT THIS SURVEY
- 100.00'(R) MEASUREMENT OF RECORD—HIGHLAND MEADOWS SUBDIVISION—PHASE 2 (DOC. NO. 3391080)
- P.O.B. POINT OF BEGINNING
- Y.P.C. YELLOW PLASTIC CAP
- O.P.C. ORANGE PLASTIC CAP
- R.P.C. RED PLASTIC CAP
- C.O.S. CERTIFICATE OF SURVEY NUMBER
- (NPTP) NOT A PART OF THIS PLAT
- AC. ACRES
- SQ.FT. SQUARE FEET
- N.W.E. NORTHWESTERN ENERGY



### SURVEY NOTES:

1. FRONT LOT LINE MONUMENTS ARE WITNESS CORNERS SET ON THE BOUNDARY OF THE NEW 6' PUBLIC ACCESS AND UTILITY EASEMENT AND DO NOT REPRESENT THE TRUE LOT CORNER.
2. CURVE GEOMETRY MONUMENTS ARE REFERENCE MONUMENTS SET ON THE NEW 6' PUBLIC ACCESS AND UTILITY EASEMENT BOUNDARY AND ARE RADIAL TO THE CURVE GEOMETRY THEY REFERENCE.

Curve #	Length	Radius	Delta	Chord Direction	Chord Length
C4	141.02'	326.00'	024°47'07"	N2° 37' 32"W	139.93'
C5	165.13'	374.00'	025°17'49"	N2° 52' 53"W	163.79'
C6	92.02'	389.00'	013°33'15"	N77° 05' 07"W	91.81'
C7	16.31'	11.00'	084°57'29"	S67° 12' 46"W	14.86'
C8	16.32'	11.00'	085°00'10"	N17° 46' 02"W	14.86'
C9	50.55'	73.01'	039°40'20"	S41° 52' 30"E	49.55'
C10	50.74'	63.00'	046°08'30"	N0° 29' 42"E	49.38'
C11	16.32'	11.00'	084°58'49"	N47° 57' 54"W	14.86'
C12	75.28'	176.00'	024°30'27"	S77° 17' 28"W	74.71'
C14	98.87'	224.00'	025°17'25"	S76° 53' 59"W	98.07'
C15	16.32'	11.00'	084°58'51"	N47° 03' 19"E	14.86'
C16	172.69'	389.00'	025°26'09"	N17° 16' 57"E	171.28'
C17	16.32'	11.00'	084°58'49"	N12° 29' 23"W	14.86'
C18	132.63'	226.00'	033°37'29"	N71° 47' 31"W	130.74'
C19	160.80'	274.00'	033°37'29"	N71° 47' 31"W	158.50'
C20	16.32'	11.00'	084°59'14"	N82° 32' 01"E	14.86'

Line #	Direction	Length
L1	S24°44'02"W	13.81'
L2	S24°44'02"W	13.78'
L3	S89°32'42"W	13.91'
L4	S89°32'42"W	13.91'
L5	N88°36'16"W	18.53'
L6	N88°36'16"W	7.79'

**BASIS OF BEARING**  
CONTROL POINT #1 (GPS BASE) - SET 1" REBAR WITH SE&A CONTROL RED PLASTIC CAP  
ORIS POSITION OBSERVED ON 11-14-2018  
MONTANA STATE PLANE, NAD83, MONTANA 2500  
PROJECTED TO GROUND UNITS AT:  
NORTH LATITUDE: 46°35'59.95615"  
WEST LONGITUDE: 111°55'01.73827"  
MERIDIAN CONVERGENCE ANGLE = (-)01'46"05"

ALL DISTANCES ARE IN INTERNATIONAL FOOT UNITS.



**STAHLY ENGINEERING & ASSOCIATES**  
PROFESSIONAL ENGINEERS & SURVEYORS  
www.seaeng.com

2223 MONTANA AVE. STE. 201 HELENA, MT 59101  
Phone: (406)601-4055

3530 CENTENNIAL DR. HELENA, MT 59601  
Phone: (406)442-8594 Fax: (406)442-8557

851 BRIDGER DR. STE. 1 BOZEMAN, MT 59715  
Phone: (406)522-8594 Fax: (406)522-9528

COUNTY: LEWIS & CLARK  
PRINCIPAL MERIDIAN, MONTANA

### AMENDED PLAT

1/4	SEC	T	R	1/4	SEC	T	R
	25	10N	3W				

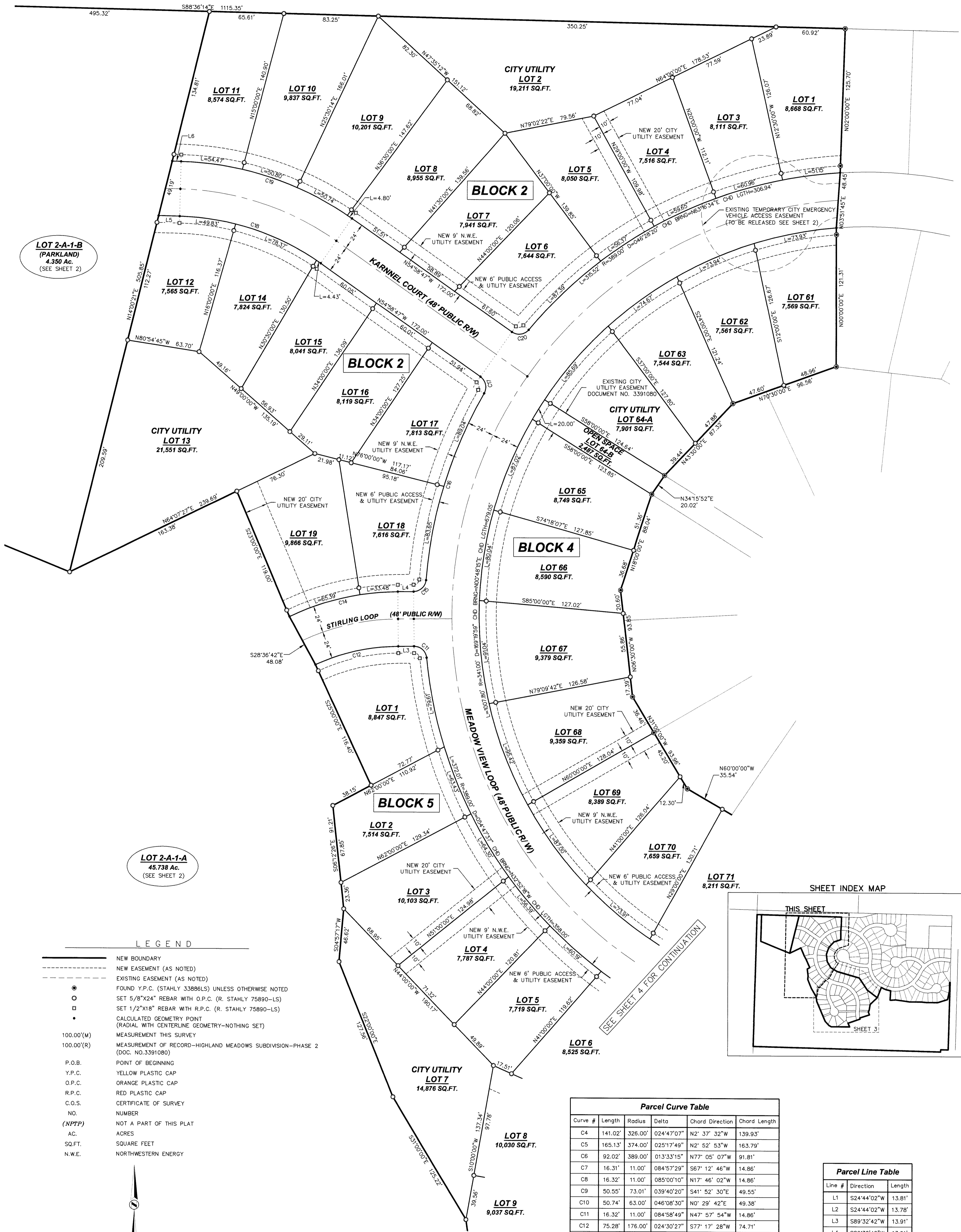
FIELD: RJS  
DRAWN: RJS  
CHECKED: NCF  
DATE: 12/21/2022

L:\2821-Highland Meadows LLC-00721\_Phase3\DWG\Survey\2821-00721\_FP.dwg, 4 DETAIL (2), Plotted: Dec 21, 2022 - 9:58am

# AMENDED PLAT OF LOT 2-A-1 OF THE HIGHLAND MEADOWS SUBDIVISION - PHASE 2

## TO BE KNOWN AS HIGHLAND MEADOWS SUBDIVISION - PHASE 3

A SUBDIVISION OF LOT 2-A-1 OF THE HIGHLAND MEADOWS SUBDIVISION - PHASE 2, DOCUMENT NO. 3391080,  
LOCATED WITHIN THE NORTHEAST QUARTER OF SECTION 25, TOWNSHIP 10 NORTH, RANGE 3 WEST, P.M.M.,  
CITY OF EAST HELENA, LEWIS AND CLARK COUNTY, MONTANA

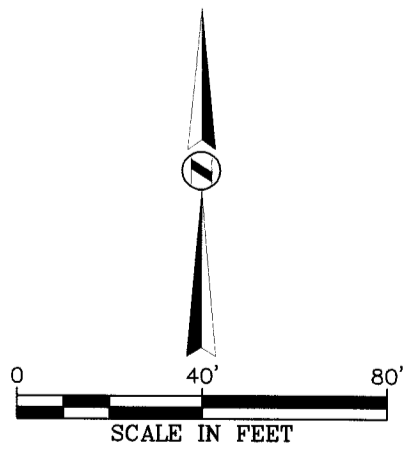


**LOT 2-A-1-B (PARKLAND)**  
4.350 Ac.  
(SEE SHEET 2)

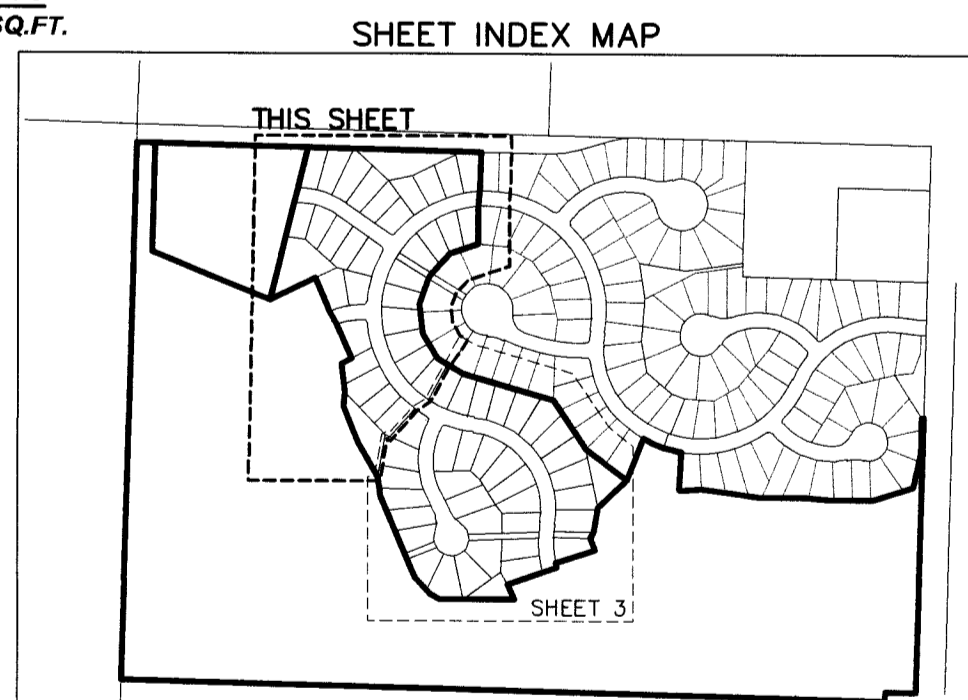
**LOT 2-A-1-A**  
45.738 Ac.  
(SEE SHEET 2)

### LEGEND

- NEW BOUNDARY
- - - NEW EASEMENT (AS NOTED)
- - - EXISTING EASEMENT (AS NOTED)
- FOUND Y.P.C. (STAHLY 33886LS) UNLESS OTHERWISE NOTED
- SET 5/8"x24" REBAR WITH O.P.C. (R. STAHLY 75890-LS)
- SET 1/2"x18" REBAR WITH R.P.C. (R. STAHLY 75890-LS)
- CALCULATED GEOMETRY POINT (RADIAL WITH CENTERLINE GEOMETRY—NOTHING SET)
- 100.00'(W) MEASUREMENT THIS SURVEY
- 100.00'(R) MEASUREMENT OF RECORD—HIGHLAND MEADOWS SUBDIVISION—PHASE 2 (DOC. NO. 3391080)
- P.O.B. POINT OF BEGINNING
- Y.P.C. YELLOW PLASTIC CAP
- O.P.C. ORANGE PLASTIC CAP
- R.P.C. RED PLASTIC CAP
- C.O.S. CERTIFICATE OF SURVEY
- NO. NUMBER
- (NPTP) NOT A PART OF THIS PLAT
- AC. ACRES
- SQ.FT. SQUARE FEET
- N.W.E. NORTHWESTERN ENERGY



**SURVEY NOTES:**  
1. FRONT LOT LINE MONUMENTS ARE WITNESS CORNERS SET ON THE BOUNDARY OF THE NEW 6' PUBLIC ACCESS AND UTILITY EASEMENT AND DO NOT REPRESENT THE TRUE LOT CORNER.  
2. CURVE GEOMETRY MONUMENTS ARE REFERENCE MONUMENTS SET ON THE NEW 6' PUBLIC ACCESS AND UTILITY EASEMENT BOUNDARY AND ARE RADIAL TO THE CURVE GEOMETRY THEY REFERENCE.



Curve #	Length	Radius	Delta	Chord Direction	Chord Length
C4	141.02'	326.00'	024°47'07"	N2° 37' 32"W	139.93'
C5	165.13'	374.00'	025°17'49"	N2° 52' 53"W	163.79'
C6	92.02'	389.00'	013°33'15"	N77° 05' 07"W	91.81'
C7	16.31'	11.00'	084°57'29"	S67° 12' 46"W	14.86'
C8	16.32'	11.00'	085°00'10"	N17° 46' 02"W	14.86'
C9	50.55'	73.01'	039°40'20"	S41° 52' 30"E	49.55'
C10	50.74'	63.00'	046°08'30"	N0° 29' 42"E	49.38'
C11	16.32'	11.00'	084°58'49"	N47° 57' 54"W	14.86'
C12	75.28'	176.00'	024°30'27"	S77° 17' 28"W	74.71'
C14	98.87'	224.00'	025°17'25"	S76° 53' 59"W	98.07'
C15	16.32'	11.00'	084°58'51"	N47° 03' 19"E	14.86'
C17	16.32'	11.00'	084°58'49"	N12° 29' 23"W	14.86'
C18	132.63'	226.00'	033°37'29"	N71° 47' 31"W	130.74'
C19	160.80'	274.00'	033°37'29"	N71° 47' 31"W	158.50'
C20	16.32'	11.00'	084°59'14"	N82° 32' 01"E	14.86'

Line #	Direction	Length
L1	S24°44'02"W	13.81'
L2	S24°44'02"W	13.78'
L3	S89°32'42"W	13.91'
L4	S89°32'42"W	13.91'
L5	N88°36'16"W	18.53'
L6	N88°36'16"W	7.79'

**BASIS OF BEARING:**  
CONTROL POINT #1 (GPS BASE) - SET 3" REBAR WITH SE&A CONTROL RED PLASTIC CAP  
OPUS POSITION OBSERVED ON 11-14-2018  
MONTANA STATE PLANE, NAD83, MONTANA 2500  
PROJECTED TO GROUND UNITS AT:  
NORTH LATITUDE: 46°35'59.95615"  
WEST LONGITUDE: 111°55'01.73827"  
MERIDIAN CONVERGENCE ANGLE = (-)01'46"05"  
ALL DISTANCES ARE IN INTERNATIONAL FOOT UNITS.

**STAHLY ENGINEERING & ASSOCIATES**  
PROFESSIONAL ENGINEERS & SURVEYORS  
www.seaeng.com

2223 MONTANA AVE. STE. 201 BILLINGS, MT 59101 Phone: (406)601-4055

3530 CENTENNIAL DR. HELENA, MT 59601 Phone: (406)442-8594 Fax: (406)442-8557

851 BRIDGER DR. STE. 1 BOZEMAN, MT 59715 Phone: (406)522-8594 Fax: (406)522-9528

**AMENDED PLAT**

COUNTY: LEWIS & CLARK

PRINCIPAL MERIDIAN, MONTANA

1/4	SEC	T	R	1/4	SEC	T	R
	25	10N	3W				

FIELD: RJS  
DRAWN: RJS  
CHECKED: NCF  
DATE: 12/21/2022

SHEET  
**4 OF 4**